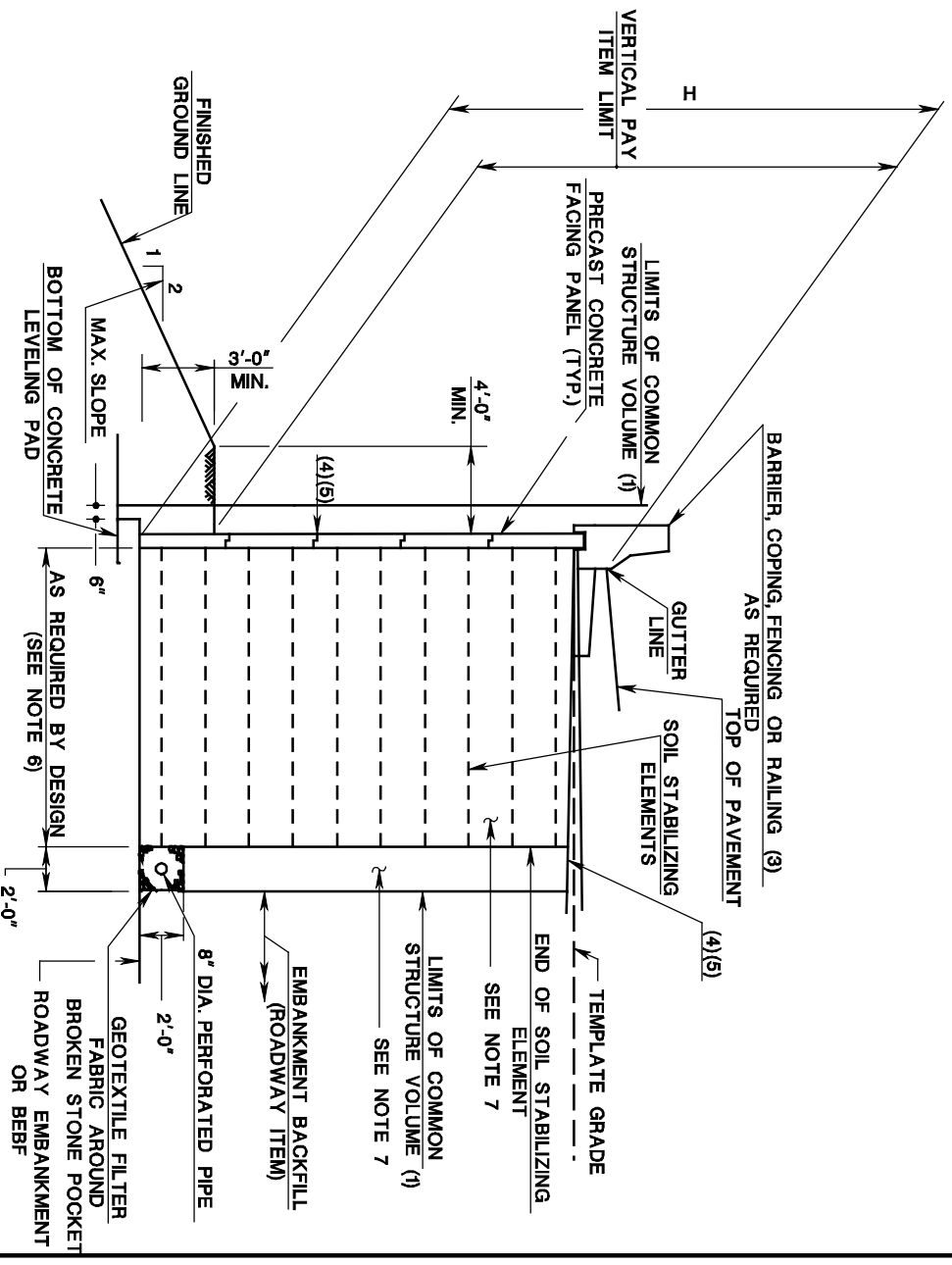


MECHANICALLY STABILIZED EARTH WALL TYPICAL FILL SECTION

ISSUED: 2009

PLATE
3.4-8



TYPICAL SECTION
(FILL)

MECHANICALLY STABILIZED EARTH WALL

- (1) THE LIMIT OF COMMON STRUCTURE VOLUME BEHIND THE WALL SHALL BE GOVERNED BY THE WIDEST LIMIT OF ALTERNATE WALL ALLOWED IN THE CONTRACT AT THAT LOCATION. THE DESIGNER SHALL CONTACT THE WALL MANUFACTURER TO DETERMINE THE WIDTH OF THE NEEDED CUT.
- (2) FOR WALLS BUILT IN PARTIAL CUT AND FILL AREAS, THE COMMON STRUCTURE VOLUME LIMITS FOR EACH SITUATION SHALL BE COMBINED INTO ONE TYPICAL SECTION.
- (3) PAYMENT FOR THIS ITEM IS BASED ON PROJECT TO PROJECT BASIS.
- (4) REFERENCE SECTION 17 OF THIS MANUAL FOR PROVISION OF AN IMPERVIOUS MEMBRANE UPON COMPLETION OF THE SPECIFIED BACKFILL PLACEMENT. ALSO, PROVISION OF FILLER MATERIAL OR FILTER FABRIC AT THE LOCATION OF VERTICAL AND HORIZONTAL JOINTS BETWEEN PANELS SHOULD BE VERIFIED WITH THE MANUFACTURER.
- (5) DRAINAGE REQUIREMENTS SHOULD BE ADHERED TO.
- (6) AS REQUIRED BY DESIGN, A MINIMUM OF 0.7H SHALL BE USED TO SATISFY REINFORCEMENT LENGTH REQUIREMENTS. 0.8H PLUS 2'-0" SHALL BE USED TO SATISFY COMMON STRUCTURE VOLUME REQUIREMENTS.
- (7) REFER TO THE NJDOT STANDARD SPECIFICATIONS AND SECTION 17 OF THIS MANUAL FOR PERMISSIBLE BACKFILL MATERIALS AND REQUIREMENTS FOR THE PLACEMENT OF GEOTEXTILE FILTER FABRIC MATERIAL.